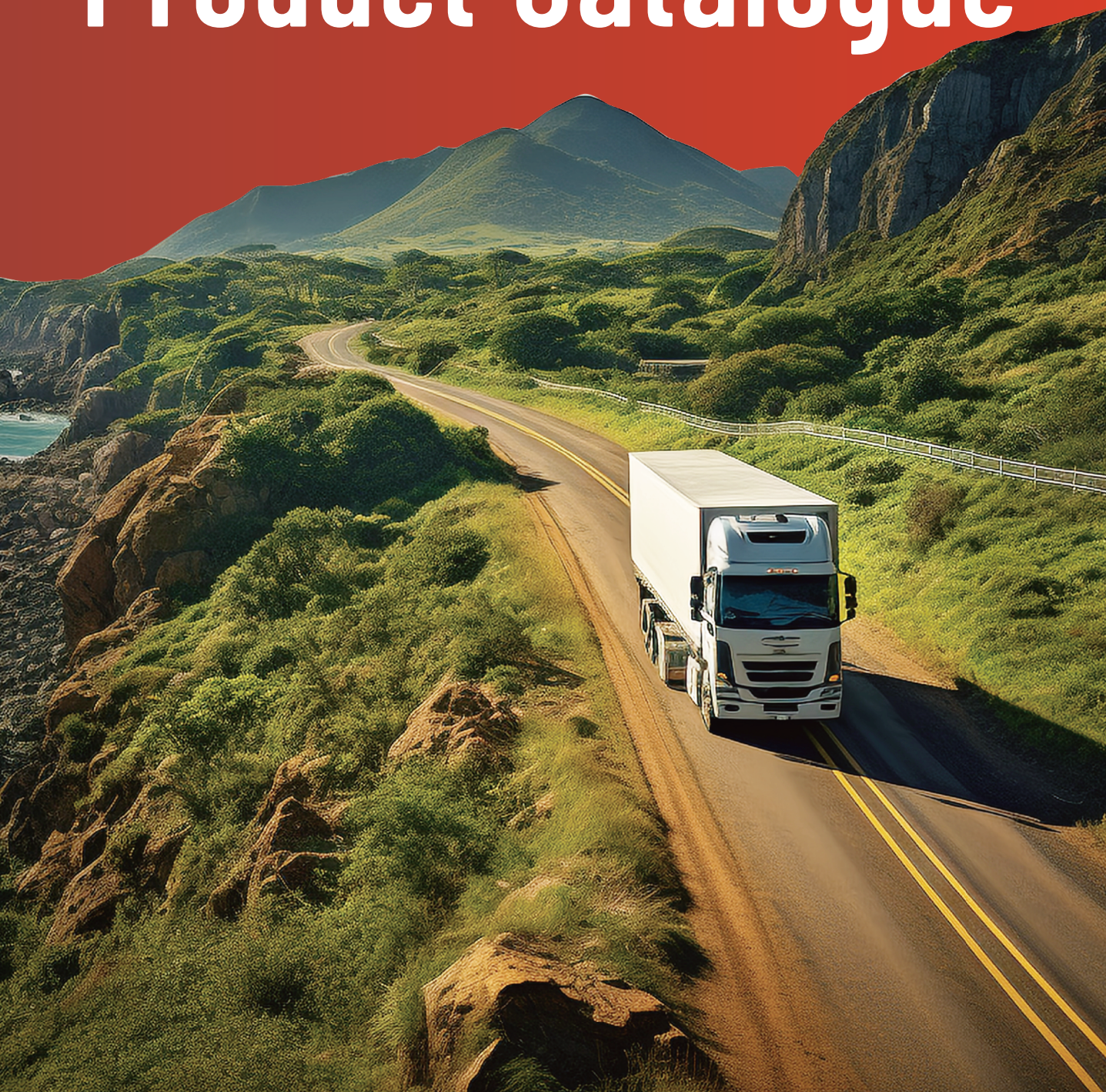




TRUCK TIRE

Product Catalogue





19 Years History, Wide Range of Services

19

Established in 2005, AUFINE has been deeply involved in the truck tire industry for 19 years.

130+

AUFINE has provided high-quality product solutions to customers in more than 130 countries and regions.

R&D and Production Industry-leading Level

Strict Quality Control

Each tire has passed the high-precision quality inspection of the x-ray machine and dynamic balance tester. Strictly control the quality and escort the safety of every vehicle owner.

Global Smart Production

AUFINE has many smart factories, all of which use advanced intelligent production lines to ensure product quality.

Product Innovation, Authorized Certification

40+

AUFINE has successfully applied for more than 40 tire patents, continuously upgrading product performance.



10+

AUFINE has passed DOT, ECE, E-MARK, S-MARK, GCC, CCC, NOM, REACH, BIS, SONCAP, INMETRO, LATU and other authoritative certifications.





EUROPEAN TYRE LABELLING

REGULATION (EC)NO 2020/740



FUEL EFFICIENCY

Indicates fuel economy.

It is ranked from highest to lowest on a scale of A to G.

The fuel efficiency can be improved by up to **20%**.



WET GRIP

Indicates braking ability in wet conditions.

It is ranked from highest to lowest on a scale of A to G.

The braking distance can be shortened by up to **30%**.

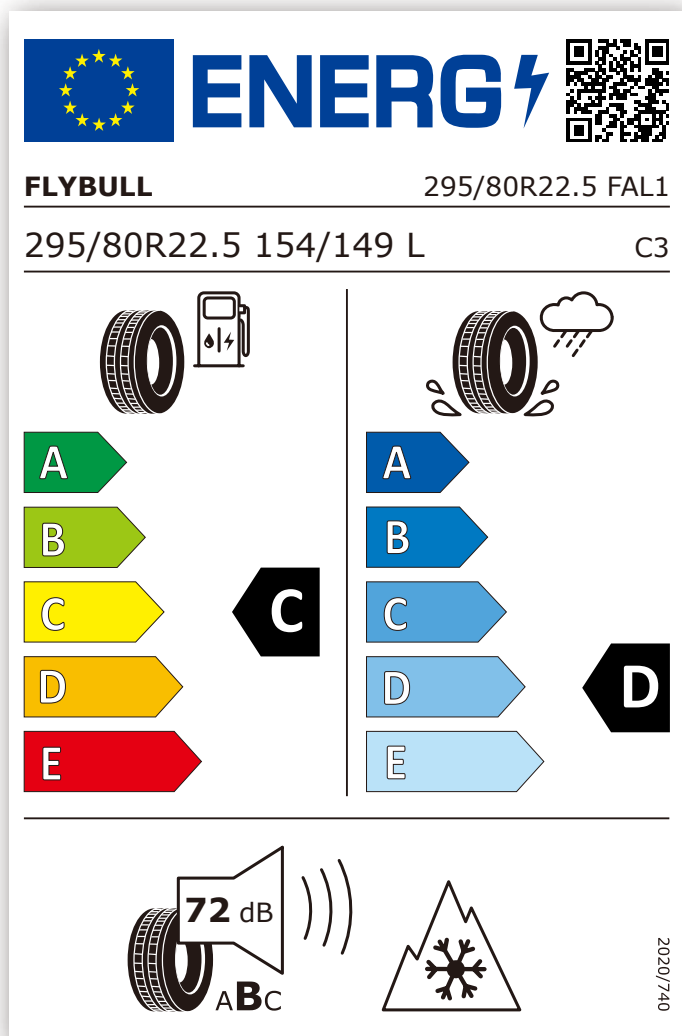


EXTERIOR NOISE

Indicates the noise level outside the vehicle.

The level of noise is indicated by the number of sound wave lines.

The European Union is progressively raising noise standards to reduce noise pollution in the environment.



1 black sound wave
(=3dB already less than the future European limit)



2 black sound waves
(= already compliant with the future European limit)



3 black sound waves
(= compliant with the current European limit)



Super Wear-resistant



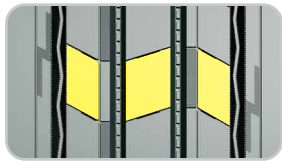
Anti-clamping Stone



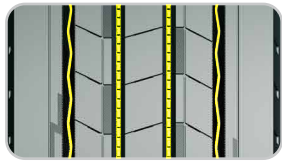
Anti-eccentric Wear



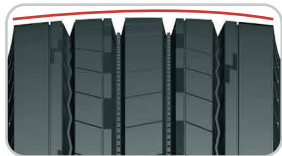
Unique Pattern Design



Unique pattern design makes the product more beautiful and generous.



Wide driving surface and deep groove design ensure ultra-wear resistance.



The new exterior design gives the tire a more even distribution of pressure on contact with the ground and a greater ability to resist eccentric wear.



Size	PR	Load Range	Load Index	Speed Rating	Max Speed mph	Tread Depth		Standard Rim	Max Tire Load Single		Max Tire Load Dual	
						32nds	mm		lbs.	psi.	lbs.	psi.
295/80R22.5	20	L	154/149	L	75	20.8	16.5	9.00	8270	123	7160	123
315/80R22.5	22	M	160/157 (157/154)	J(K)	62	19.5	15.5	9.00	9920	138	9090	138
385/65R22.5	24	N	164(162)	J(K)	62	20.8	16.5	11.75	11000	138	—	—





Super Wear-resistant



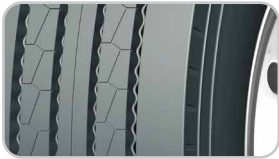
Anti-clamping Stone



Anti-eccentric Wear

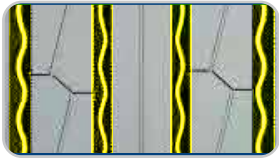


Ultra-long Service Life



Optimized design with widened shoulder and crown arc for longer lifespan.

Sine wave groove and rolling groove wall tech prevent stone trapping and noise, ensuring a safe and comfortable ride.



Advanced tread compound and balanced inner contour design for long-lasting performance.



Wide surface design for uniform wear, extended lifespan, and longer mileage.



Size	PR	Load Range	Load Index	Speed Rating	Max Speed mph	Tread Depth		Standard Rim	Max Tire Load Single		Max Tire Load Dual	
						32nds	mm		lbs.	psi.	lbs.	psi.
235/75R17.5	18	J	143/141	J	62	17.1	13.6	6.75	6005	127	5675	127
275/80R22.5	18	J	149/146	M	81	19.0	15.1	8.25	7160	130	6610	130
275/70R22.5	18	J	148/145	L	75	20.7	16.4	8.25	6945	130	6395	130
295/80R22.5	18	J	152/149	M	81	17.8	14.1	9.00	7830	130	7160	130
11R22.5	18	J	149/146	L	75	19.0	15.1	8.25	7160	135	6610	135
12R22.5	18	J	152/149	L	75	21.3	16.9	9.00	7830	135	7160	135





Ultra-long Mileage



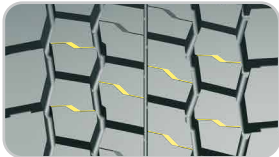
Strong Driving Force



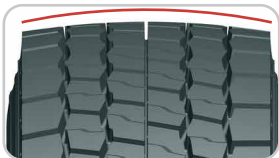
Puncture Resistance



Anti-eccentric Wear



/ New transverse pattern design provides strong brake and traction ability.



/ Optimized contour design makes the tread force more uniform and effectively improves the wear resistance of the tire.



/ High-strength steel wire and thickened sidewall design ensure safer tire uses.



Size	PR	Load Range	Load Index	Speed Rating	Max Speed mph	Tread Depth		Standard Rim	Max Tire Load Single		Max Tire Load Dual	
						32nds	mm		lbs.	psi.	lbs.	psi.
295/80R22.5	20	L	154/149	L	75	25.8	20.5	9.00	8270	123	7160	123
315/80R22.5	22	M	160/157 (157/154)	J(K)	62	27.7	22.0	9.00	9920	138	9090	138
315/70R22.5	20	L	156/150 (154/150)	L(M)	75	25.2	20.0	9.00	8820	130	7390	130



ENDURO

FDM38



- / The directional pattern combined with the deep groove design can effectively improve the driving force and traction performance of the tire.
- / The large-angle groove wall design can effectively prevent stones from being trapped in the groove, avoid cracks at the bottom of the groove, and further increase the service life of the tire.
- / The reinforced skeleton material ensures the superior load-carrying performance of the product and makes driving safer.
- / Special tread formula design, strong puncture resistance.



Size	PR	Load Range	Load Index	Speed Rating	Max Speed mph	Tread Depth		Standard Rim	Max Tire Load Single		Max Tire Load Dual	
						32nds	mm		lbs.	psi.	lbs.	psi.
315/80R22.5	22	M	160/157 (157/154)	J(K)	62	29.0	22.6	9.00	9920	138	9090	138

ENDURO

FAH3



- / Big block pattern design provides excellent driving and gripping performances.
- / Reinforced carcass and bead design provide high quality and performance under heavy load conditions.
- / Self-cleaning, open shoulder tread design help enhance traction and flotation capabilities on varied terrains.



Size	PR	Load Range	Load Index	Speed Rating	Max Speed mph	Tread Depth		Standard Rim	Max Tire Load Single		Max Tire Load Dual	
						32nds	mm		lbs.	psi.	lbs.	psi.
12R22.5	20	L	154/151	F	50	29.9	23.7	9.00	8270	140	7610	140



ENDURO

FTR21



- / Wide footprint tread design promotes mileage.
- / Optimized zig-zag central grooves promote steering precision and provide strong handling ability on both wet and dry roads.
- / Lateral grooves with built-in stone ejectors prevent stone trapping and enhance tear resistance, thus extending the lifespan of tires.
- / Widened tread shoulder design reduces rubber movement ensuring optimal even wear.



Size	PR	Load Range	Load Index	Speed Rating	Max Speed mph	Tread Depth		Standard Rim	Max Tire Load Single		Max Tire Load Dual	
						32nds	mm		lbs.	psi.	lbs.	psi.
385/65R22.5	24	N	160(162)	J(K)	62	21.4	17.0	11.75	11000	138	—	—

ENDURO

FDR23



- / Asymmetrical block pattern design offer excellent driving force, lesss kidding and safer driving.
- / Unique high abrasion formula wear resistance, and a certain resistance to barbed wire,the use of mileage longer.
- / Design of bosses in pattern groove bottom offers self cleaning property and effectively prevent bottom cracking.



Size	PR	Tread Depth	Load Index	Speed Symbol	Std.Rim	Max load(kg)	Std.cold(kpa)
315/60R22.5	18	17.9	152/148	L	9.75	3550/3150	900



ENDURO

FAR25



- / Reasonable design of groove corners reduce partial wear (River abrasion)
- / The wwave shaped groove wall design can effectively prevent the tire tread from clamping the stone
- / Under the condition of fixed load will have long wear life when on good road
- / High durability tire design, applicable all wheel tires



Size	PR	Tread Depth	Load Index	Speed Symbol	Std.Rim	Max load(kg)	Std.cold(kpa)
11R22.5	18	15.1	149/146	L	8.25	3250/3000	930

ENDURO

FAU2



- / Special formula design for public transportation with Deeped pattern and widen tread
- / Strengthen the carcass structure, improve the durability of the matrix,increase the rate ofrenovation
- / Four verticallines pattern design offers a better drainage performance and wet skid resistance



Size	PR	Tread Depth	Load Index	Speed Symbol	Std.Rim	Max load(kg)	Std.cold(kpa)
275/70R22.5	18	16.9	152/148	F	8.25	3550/3150	900



ENDURO

FAL11



- / Vertical pattern design on tread region reduces the laterals sliding ,improve the tire operation performance ,Steering performance and drainage performance.
- / The center pattern with Multiincision design effectively reduces the irregular wear of crown and improve the tire grip force.
- / Special formula for high heat dissipation and high abrasion resistance compound affords both greater mileage and longer service life



Size	PR	Tread Depth	Load Index	Speed Symbol	Std.Rim	Max load(kg)	Std.cold(kpa)
215/75R17.5	16	12.1	135/133	J	6.00	2180/2060	865
235/75R17.5	16	12.1	143/141	J	6.75	2725/2575	865

ENDURO

FAM36



- / Good passing performance, anti-slip and semi-drive performance.
- / Excellent groove self-cleaning performance, punc ture-resistant and Stone-resistant tread.
- / Semi-open shoulder design reducesheat generation and shoulder void.
- / The tread has good wear resistance and long service life



Size	PR	Tread Depth	Load Index	Speed Symbol	Std.Rim	Max load(kg)	Std.cold(kpa)
7.00R16LT	14	11	118/114	L	5.50F	1320/1180	770
7.50R16LT	14	12.1	122/118	L	6.00G	1500/1320	770
8.25R16LT	16	14.1	128/124	L	6.50H	1800/1600	770



ENDURO

FAM38



- The special pattern design provides excellent driving and grip on the compound road surface, and reduces the heat generation of tire shoulder
- Wider driving surface design makes tires more durable. Strengthen the tire ring design, provides the outstanding loading capacity of tires
- The new formulation design ensures the adaptability of the tires in various pavement environments



Size	PR	Tread Depth	Load Index	Speed Symbol	Std.Rim	Max load(kg)	Std.cold(kpa)
12.00R24	20	15.6	160/157	K	8.50	4500/4125	900
325/95R24	22	15.6	162/160	K	9.00	4750/4500	830

ENDURO

FDM36



- Wide tread and large pattern design ensures excellent driving force on the mixed pavement. Shoulder stiffener design, inhibits partial wear and prevents rubber drop.
- The angle of groove wall is designed with asymmetry angle, which can effectively reduce the phenomenon of sticking.
- Adopting the reinforcement of steel wire instead of nylon reinforcement improved the durability of tire ring.
- Designed for heavy duty, short distance and low speed dump trucks, it is suitable for short distance mixed road use in mining area and construction site.



Size	PR	Tread Depth	Load Index	Speed Symbol	Std.Rim	Max load(kg)	Std.cold(kpa)
12.00R24	20	18	160/157	K	8.5	4500/4125	900



ENDURO

FAH67



- Coherent, strong transverse block pattern gives the tires a better grip on the pit road.
- Special design of rock reinforcement, effectively prevent tires from clamping the stone, and provide the best protection for the tires.
- Strengthen bead structure, provides strong load capacity and makes the tire more durable.
- Thickening Sidewall rubber, strengthened the matrix steel wire, makes the tire side of scratch resistance better.



Size	PR	Tread Depth	Load Index	Speed Symbol	Std.Rim	Max load(kg)	Std.cold(kpa)
7.00R16LT	14	15.9	118/114	K	5.50F	1320/1180	770
7.50R16LT	14	18.4	122/118	K	6.00G	1500/1320	770
8.25R16LT	16	19.4	128/124	J	6.50H	1800/1600	770
12.00R20	20	22.2	156/153	F	8.50	4000/3650	900

ENDURO

FMT7



- Stepped large block pattern and open shoulder design increase the ground area of soft pavement, provide strong traction and grip, and ensure good passability of soft roads such as sand
- The cutting-resistant tread formula improves the puncture resistance and cutting ability, the use of low thermal base glue is more conducive to heat dissipation and ensures good high-speed performance
- Applicable models: off-road transport vehicles, wheeled armored vehicles, self-propelled artillery, etc
- Applicable road conditions: desert, cross country road, highway



Size	PR	Tread Depth	Load Index	Speed Symbol	Std.Rim	Max load(kg)	Std.cold(kpa)
14.00R20	20	19.4	164/161	J	10.00	5000/4625	790

